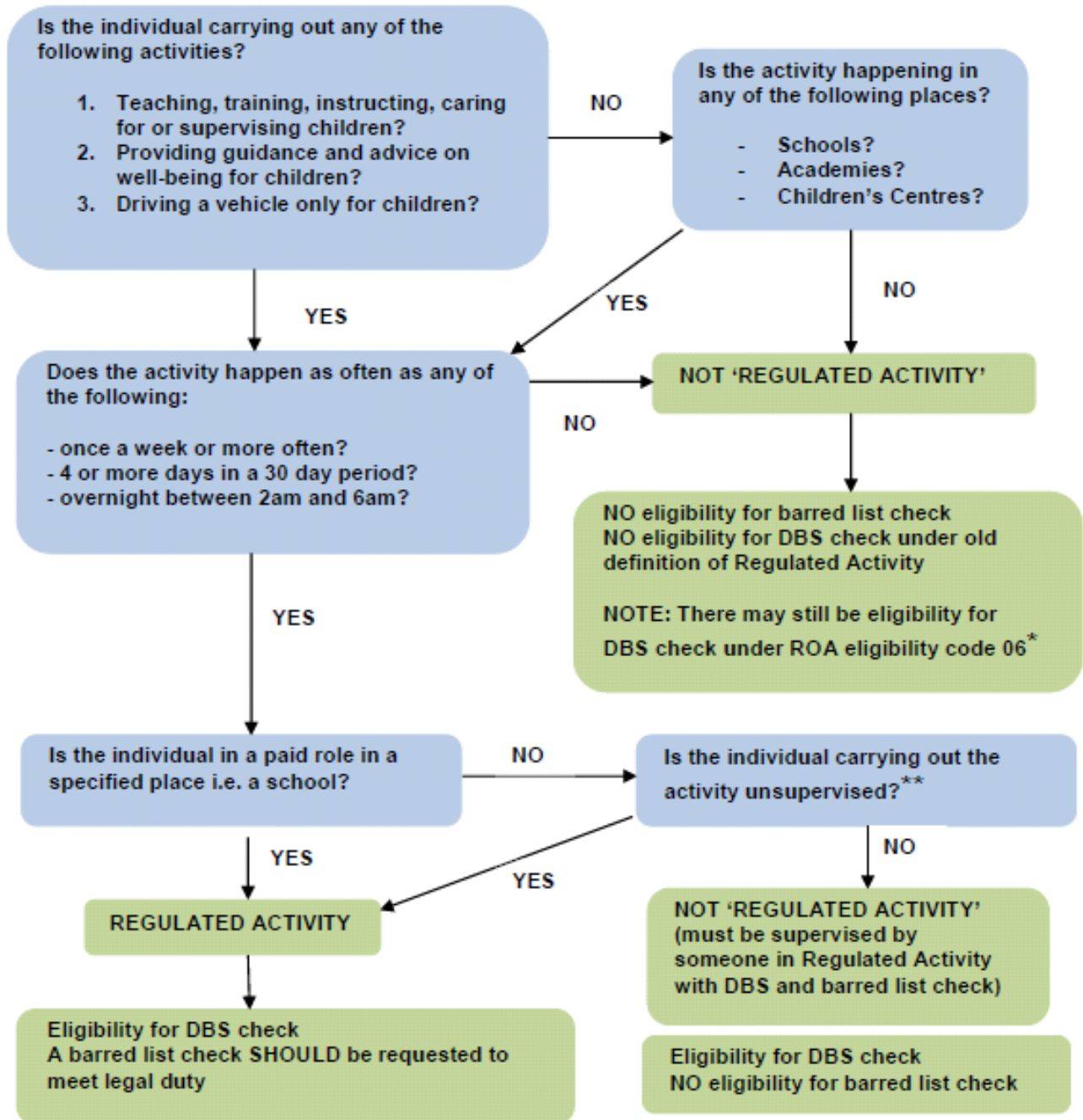


# REGULATED ACTIVITY FLOW CHART

Flow chart to determine if an individual is in 'Regulated Activity':



\* Rehabilitation of Offenders Act eligibility code 06 'Any position which otherwise involves regularly caring for, training, supervising or being solely in charge of children' is still available for sport to use. The word 'regularly' in this eligibility code is not linked to the requirements in the definition of 'Regulated Activity' – it is open to define by the organisation. It is suggested annually is not enough but an argument could be made for eligibility if an individual does an activity 8 times over the summer period or once a month for example. Appendix B lists all eligibility codes.

\*\* To answer 'No' to this question the individual carrying out the activity must be supervised by an individual who is in 'Regulated Activity' themselves.